

BANO INTERFACE

CONSTRUCTION, PLUMBING, ELECTRICAL

TABLE OF CONTENTS

Page 2-10 Washbasin w. hygiene cover

Product no.: 5202/L, 5202/R, 5207-EL, 5207-MA, 52070

Page 11-15 WC/ Cistern

Product no.: 5970S2-EL, 5970-MA, 5970-22, 5970-23

Page 16 Shower pole/ grab bar

Product no.: 5581/L, 5581/R

Page 16 Grab bar, L-shape

Product no.: 5591/L, 5591/R

Page 17 Shower seat

Product no.: 5700-02

Page 17 Shower thermostat

Product no.: 58820

Page 18 Lamp

Product no.: 5114, 5115

Page 18 Cabinet w. grab bar

Product no.: 5302D/L, 5302D/R, 5311

CON

PLU

EL



BANO HEIGHT ADJUSTABLE WASHBASIN WITH HYGIENE COVER

5202/L	BANO HEIGHT ADJUSTABLE WASHBASIN WITH HYGIENE COVER, LEFT	CON
5202/R	BANO HEIGHT ADJUSTABLE WASHBASIN WITH HYGIENE COVER, RIGHT	PLU
5207-EL	BANO ELECTRICAL HEIGHT ADJUSTMENT	
5207-MA	BANO MANUAL HEIGHT ADJUSTMENT	
52070	BANO FIXING BRACKET WITHOUT HEIGHT-ADJUSTMENT	EL

For exact position please examine blue prints and technical plans for each project.

The washbasin is fastened to wallbrackets with both glue and screws. Bano recommend 7 days curing for all glued products.

PLUMBING: Washbasin taps: Flexible tubes with internal 3/8 threads.

CONSTRUCTION: All walls must be made of materials approved for use in wet rooms in which screws can be inserted for residual fittings such as bathroom cabinets, mirrors, light fixtures, grab bars, etc. Alternatively, nailing strips must also be inserted for each of these products.

Nailingstrips must be placed flush against wall material.

Nailing strips are indicated with shaded area.

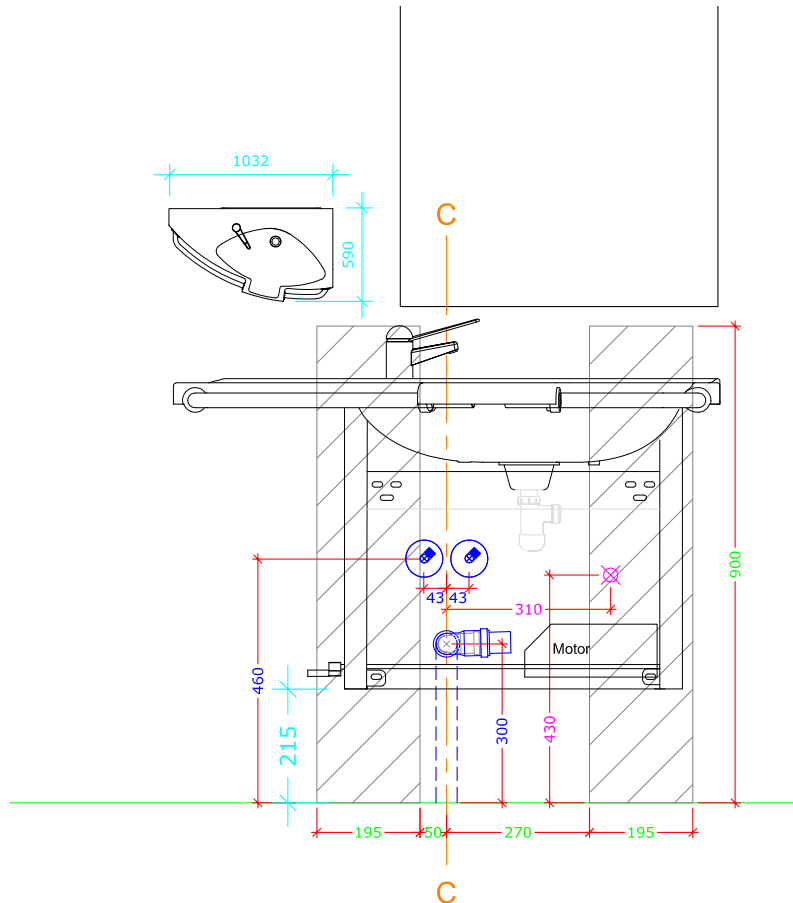


BANO HEIGHT ADJUSTABLE WASHBASIN (LEFT) WITH HYGIENE COVER, CONCEALED PIPES

5202/L
5207-EL
5207-MA

BANO HEIGHT ADJUSTABLE WASHBASIN WITH HYGIENE COVER, LEFT
BANO ELECTRICAL HEIGHT ADJUSTMENT
BANO MANUAL HEIGHT ADJUSTMENT

CON
PLU
EL



Measurements from finished floor.

NOTE! ELECTRICAL:

Electrical installation only for products with electrical height adjustment.

Cable/ pipe is pulled 500 mm from wall. Electrician connects IP44-box after the washbasin is installed. (IP44-box is not included).

NOTE! CONSTRUCTION:

Loadtested until 300 kg.

Min.: 48x198 board

Height: Min. 900 mm, preferably up to ceiling.

Nailingstrips must be placed flush against wall material.

Nailing strips are indicated with shaded area.

NOTE! PLUMBING:

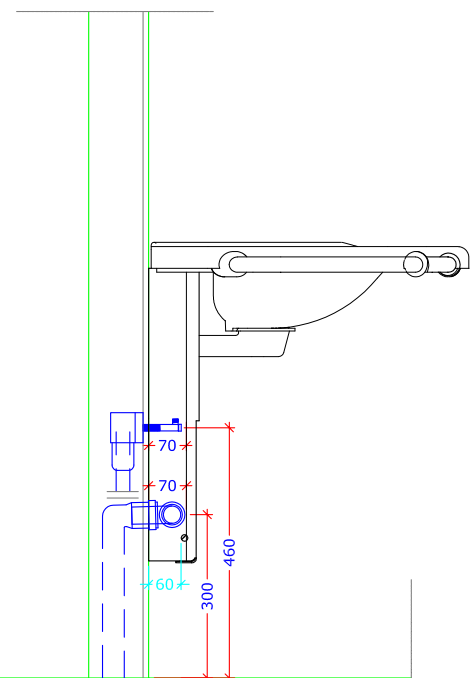
Concerning water; finish with stop valves with 3/8" external threads (G10) (Threads pointing up). It is important that the stop valves do not protrude more than 70 mm from the wall. The stop valves are turned as shown in the illustration.

Max height top of stop valve: 480 mm.

Concerning drain; 40 mm.

Drain; finish with a Ø40 mm x 88° drainbend with 40mm free pipe

Because of the built-in module it is important that the drainbend does not protrude more than 70 mm.



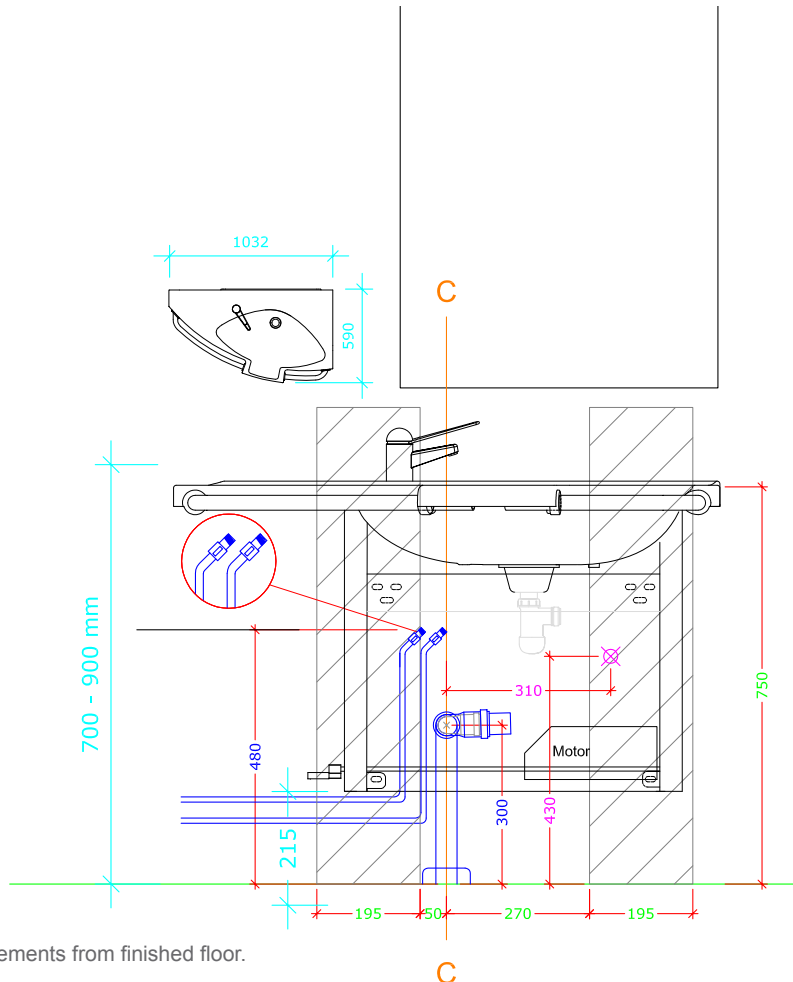
Max height top of stop valve: 480 mm.

BANO HEIGHT ADJUSTABLE WASHBASIN (LEFT) WITH HYGIENE COVER, EXPOSED PIPES

5202/L
5207-EL
5207-MA

BANO HEIGHT ADJUSTABLE WASHBASIN WITH HYGIENE COVER, LEFT
BANO ELECTRICAL HEIGHT ADJUSTMENT
BANO MANUAL HEIGHT ADJUSTMENT

CON
PLU
EL



Measurements from finished floor.

NOTE! ELECTRICAL:

Electrical installation only for products with electrical height adjustment.

Cable/ pipe is pulled 500 mm from wall. Electrician connects IP44-box after the washbasin is installed. (IP44-box is not included).

NOTE! CONSTRUCTION:

Loadtested until 300 kg.

Min.: 48x198 board

Height: Min. 900 mm, preferably up to ceiling.

Nailingstrips must be placed flush against wall material.

Nailing strips are indicated with shaded area.

NOTE! PLUMBING:

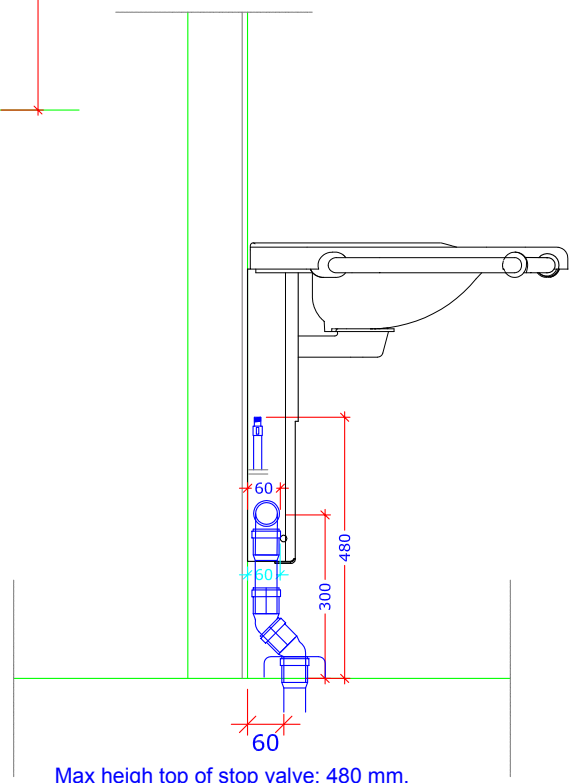
Concerning water; finish with stop valves with 3/8" external threads (G10) (Threads pointing up). It is important that the stop valves do not protrude more than 60 mm from the wall. The stop valves are turned as shown in the illustration.

Max height top of stop valve: 480 mm.

Concerning drain; 40 mm.

Drain; finish with a Ø40 mm x 88° drainbend with 40mm free pipe

Because of the built-in module it is important that the drainbend does not protrude more than 60 mm.



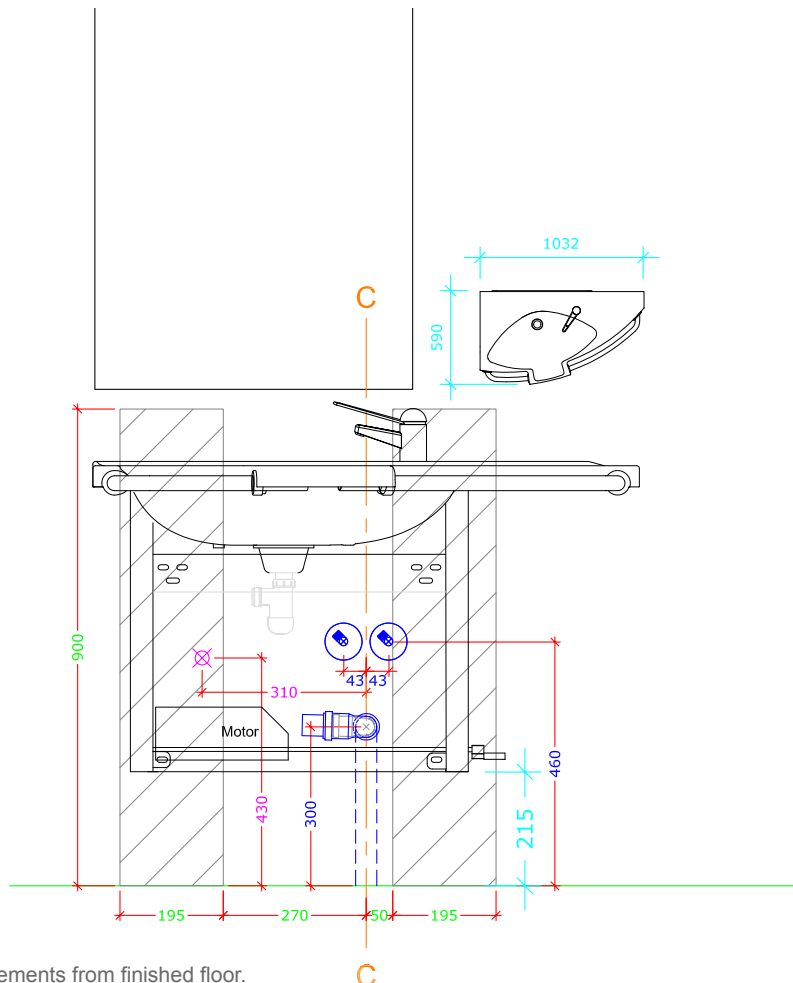
Max height top of stop valve: 480 mm.

BANO HEIGHT ADJUSTABLE WASHBASIN (RIGHT) WITH HYGIENE COVER, CONCEALED PIPES

5202/R
5207-EL
5207-MA

BANO HEIGHT ADJUSTABLE WASHBASIN WITH HYGIENE COVER, RIGHT
BANO ELECTRICAL HEIGHT ADJUSTMENT
BANO MANUAL HEIGHT ADJUSTMENT

CON
PLU
EL



Measurements from finished floor.

NOTE! ELECTRICAL:

Electrical installation only for products with electrical height adjustment.

Cable/ pipe is pulled 500 mm from wall. Electrician connects IP44-box after the washbasin is installed. (IP44-box is not included).

NOTE! CONSTRUCTION:

Loadtested until 300 kg.

Min.: 48x198 board

Height: Min. 900 mm, preferably up to ceiling.

Nailingstrips must be placed flush against wall material.

Nailing strips are indicated with shaded area.

NOTE! PLUMBING:

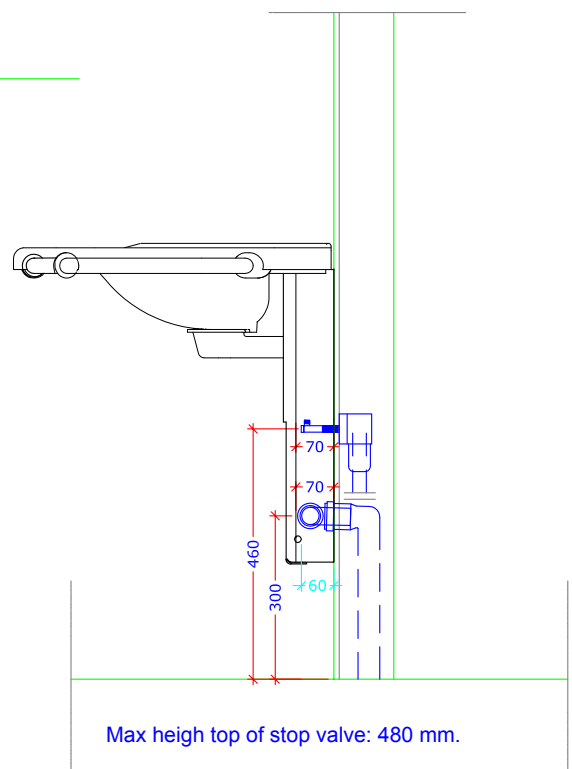
Concerning water; finish with stop valves with 3/8" external threads (G10) (Threads pointing up). It is important that the stop valves do not protrude more than 70 mm from the wall. The stop valves are turned as shown in the illustration.

Max height top of stop valve: 480 mm.

Concerning drain; 40 mm.

Drain; finish with a Ø40 mm x 88° drainbend with 40mm free pipe

Because of the built-in module it is important that the drainbend does not protrude more than 70 mm.



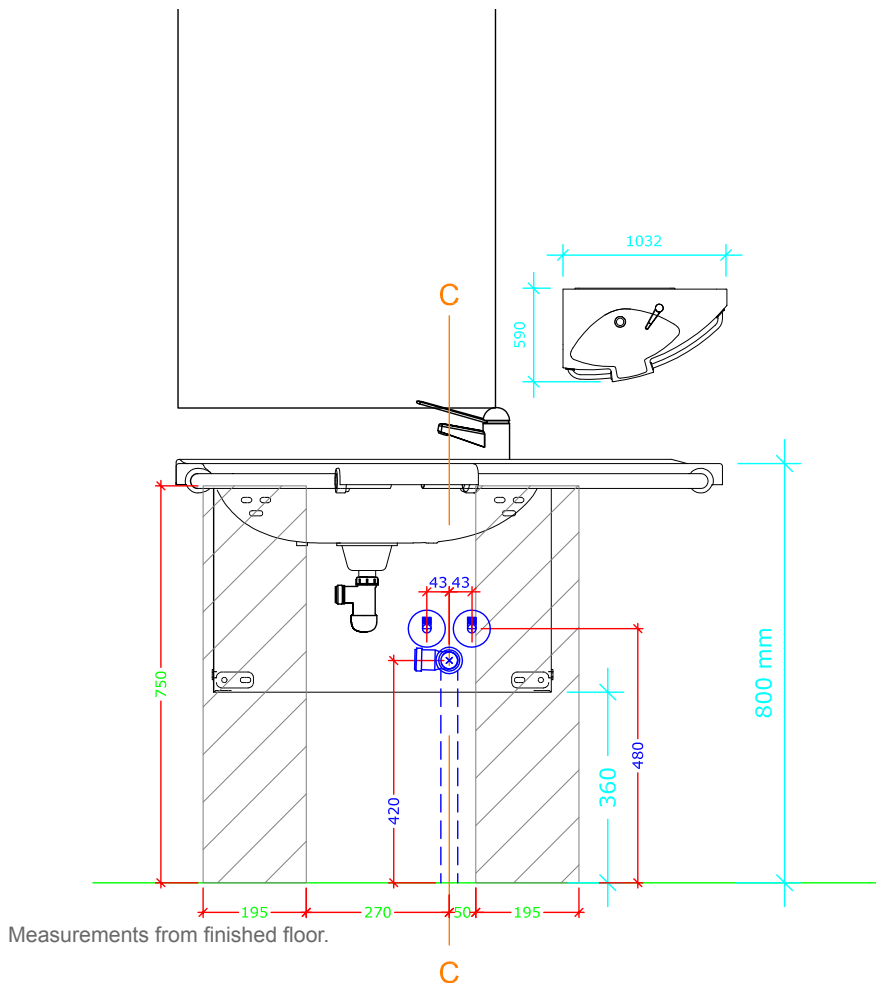
Max height top of stop valve: 480 mm.

BANO WASHBASIN (RIGHT) WITH HYGIENE COVER, CONCEALED PIPES

5202/R
52070

BANO WASHBASIN WITH HYGIENE COVER, RIGHT
BANO FIXING BRACKET WITHOUT HEIGHT-ADJUSTMENT

CON
PLU



NOTE! PLUMBING:

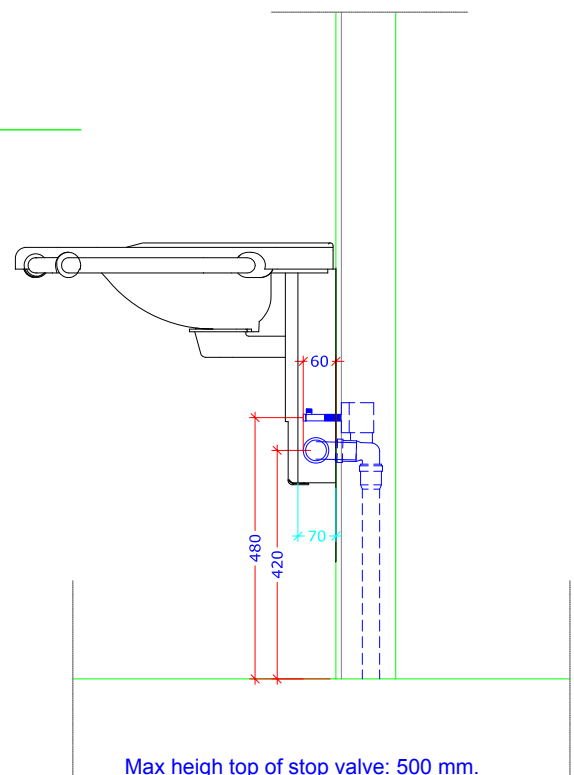
Concerning water; finish with stop valves with 3/8" external threads (G10) (Threads pointing up). It is important that the stop valves do not protrude more than 70 mm from the wall. The stop valves are turned as shown in the illustration.

Max height top of stop valve: 500 mm.

Concerning drain; 40 mm.

drain finish with a 40x88° PP-bend,

Because of the built-in module it is important that the drain bend does not protrude more than 70 mm.



NOTE! CONSTRUCTION:

Loadtested until 300 kg.

Min.: 48x198 board

Height: Min. 900 mm, preferably up to ceiling.

Nailing strips must be placed flush against wall material.

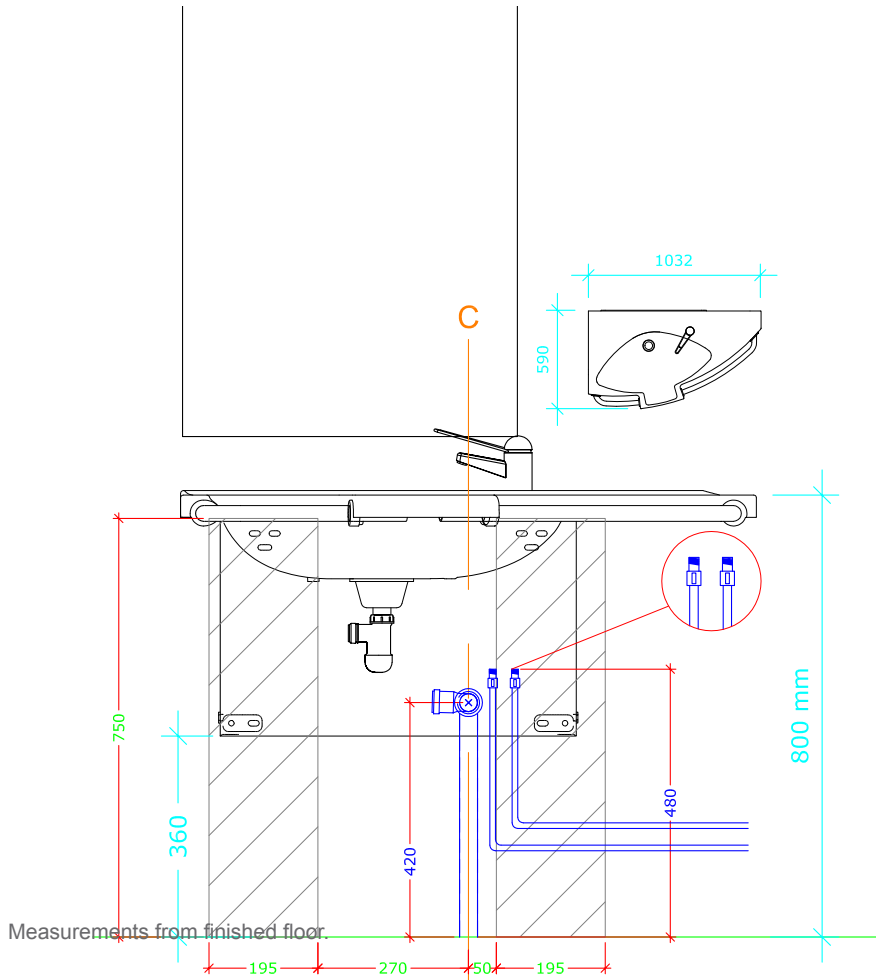
Nailing strips are indicated with shaded area.

BANO WASHBASIN (RIGHT) WITH HYGIENE COVER, EXPOSED PIPES

5202/R
52070

BANO WASHBASIN WITH HYGIENE COVER, RIGHT
BANO FIXING BRACKET WITHOUT HEIGHT-ADJUSTMENT

CON
PLU



NOTE! PLUMBING:

Concerning water; finish with stop valves with 3/8" external threads (G10) (Threads pointing up). It is important that the stop valves do not protrude more than 70 mm from the wall. The stop valves are turned as shown in the illustration.

Max height top of stop valve: 500 mm.

Concerning drain; 40 mm.

With external drain finish with a 40x88° PP-bend, 400 mm cc from floor. (not included)

Because of the built-in module it is important that the drain bend does not protrude more than 70 mm.

NOTE! CONSTRUCTION:

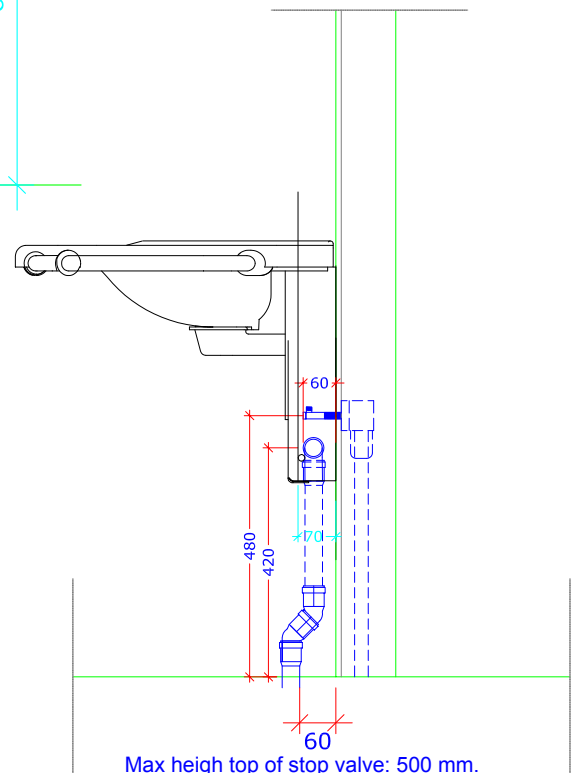
Loadtested until 300 kg.

Min.: 48x198 board

Height: Min. 900 mm, preferably up to ceiling.

Nailingstrips must be placed flush against wall material.

Nailing strips are indicated with shaded area.



Max height top of stop valve: 500 mm.

BANO HEIGHT ADJUSTABLE CISTERN

5970S2-EL	BANO CISTERN WITH ELECTRICAL HEIGHT-ADJUSTMENT
5970-MA	BANO CISTERN WITH MANUAL HEIGHT-ADJUSTMENT
5970-22	BANO EXTENTION FOR CISTERN, 50 MM
5970-23	BANO EXTENTION FOR CISTERN, 100 MM

CON

PLU

EL

For exact possition please examine blue prints and technical plans for each project.

CONSTRUCTION: All walls must be made of materials approved for use in wet rooms in which screws can be inserted for residual fittings such as bathroom cabinets, mirrors, light fixtures, grab bars, etc. Alternatively, nailing strips must also be inserted for each of these products.

Nailingstrips must be placed flush against wall material.
Nailing strips are indicated with shaded area.



BANO HEIGHT ADJUSTABLE CISTERN DRAINPIPE IN WALL

5970S2-EL
5970-MA

BANO CISTERN WITH ELECTRICAL HEIGHT-ADJUSTMENT
BANO CISTERN WITH MANUAL HEIGHT-ADJUSTMENT

CON

PLU

EL

NOTE! PLUMBING

Water outlet normally on left side as shown in illustration.

Placement of stopvalve: because of moving parts when adjusting the cistern's height the stop valve must be placed exactly as is shown on the illustration.

Stopvalves are turned as shown on drawing.

Concerning water; finish with stop valve with 1/2" external threads (G15). (Threads pointing up)

Drainpipe in wall:

Ø110 drainpipe 180 mm above floor, cut by wall.

NOTE! ELECTRICAL:

Electrical installation only for products with electrical height adjustment.

Electrical outlet normally on right side as shown in illustration.

Electrical cable/ pipe is pulled 500 mm from wall and placed 200 mm above finished floor and 100 mm from the center of the cistern's drain.

Electrician connects IP44-box after the cistern is installed. (IP44-box not included).

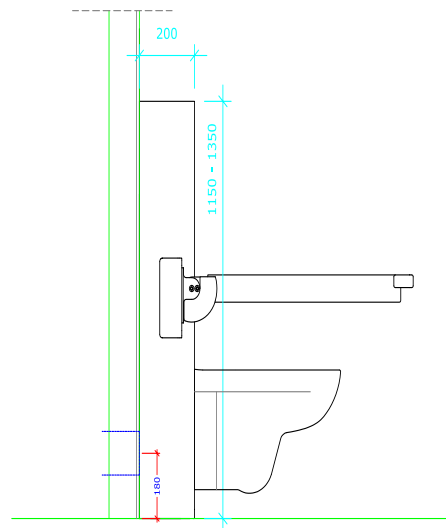
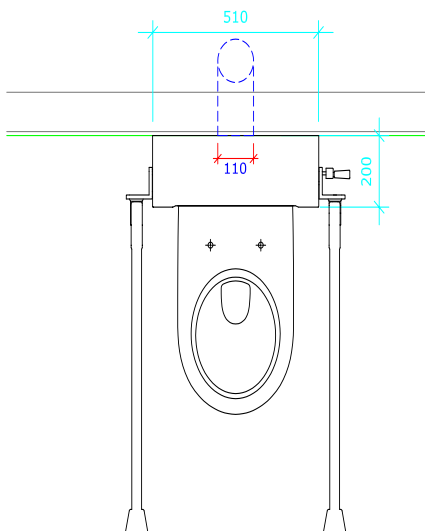
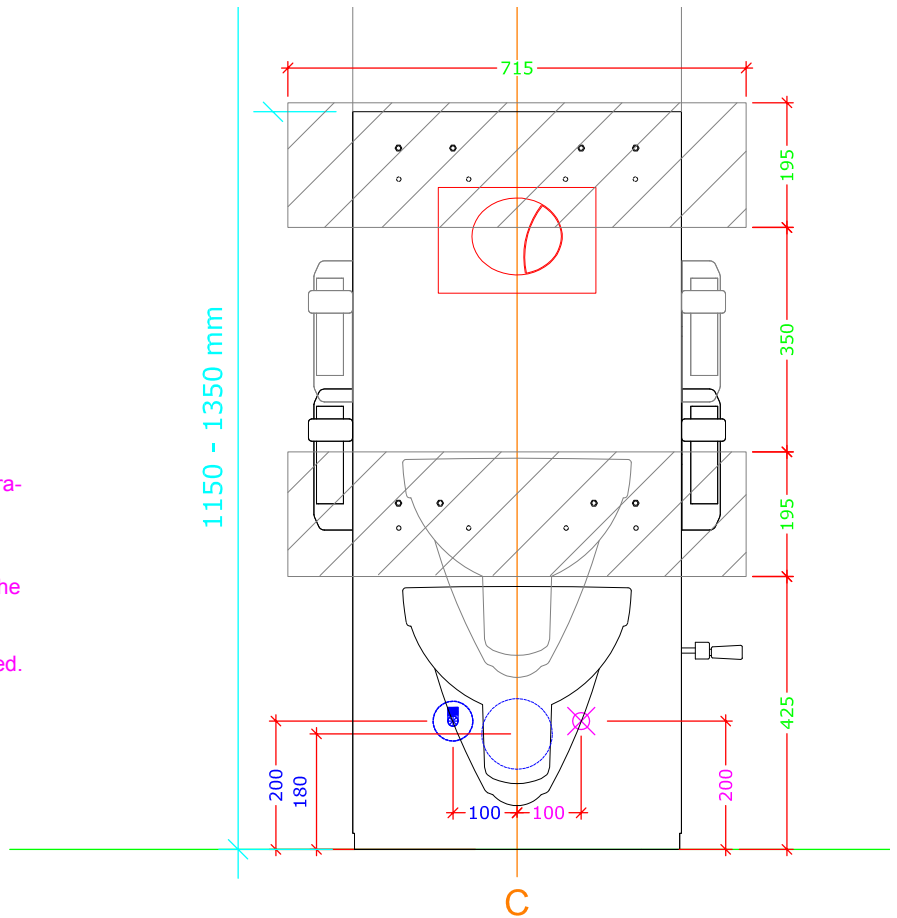
NOTE! CONSTRUCTION:

Loadtested until 500 kg.

Min.: 48x198 board

Nailingstrips must be placed flush against wall material.

Nailing strips are indicated with shaded area.



BANO HEIGHT ADJUSTABLE CISTERN EXPOSED PIPES

NOTE! PLUMBING

Water outlet normally on left side as shown in illustration.

Placement of stopvalve: because of moving parts when adjusting the cistern's height the stop valve must be placed exactly as is shown on the illustration.

Stopvalves are turned as shown on drawing.

Concerning water; finish with stop valve with 1/2" external threads (G15). (Threads pointing up)

You can pull the exposed pipes in center of the extension or at the left or right side in the bottom.

Drainpipe in floor:

Ø110 drainpipe without cuff is finished 40 mm above floor.

Drainpipe in wall:

Ø110 drainpipe 180 mm above floor, cut by wall.

NOTE! CONSTRUCTION:

Loadtested untill 500 kg.

Min.: 48x198 board

Nailingstrips must be placed flush against wall material.

Nailing strips are indicated with shaded area.

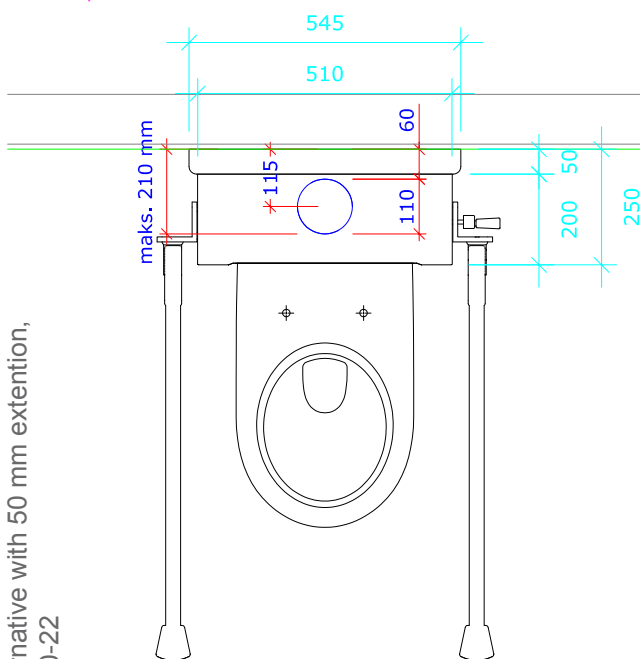
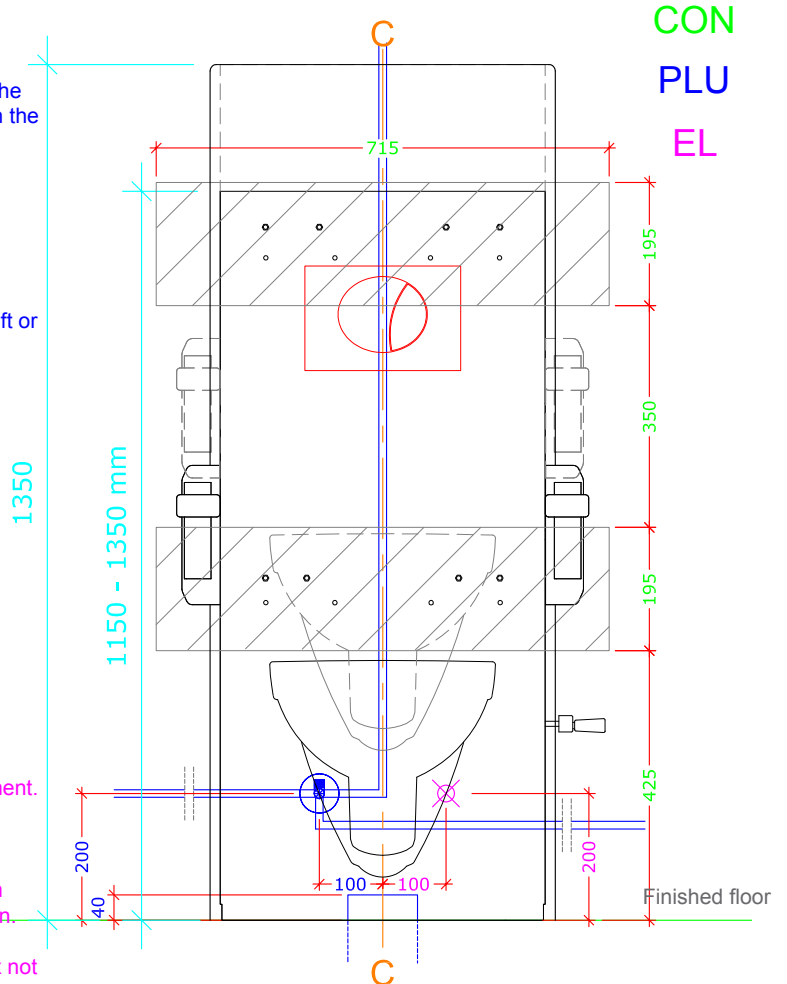
NOTE! ELECTRICAL:

Electrical installation only for products with electrical height adjustment.

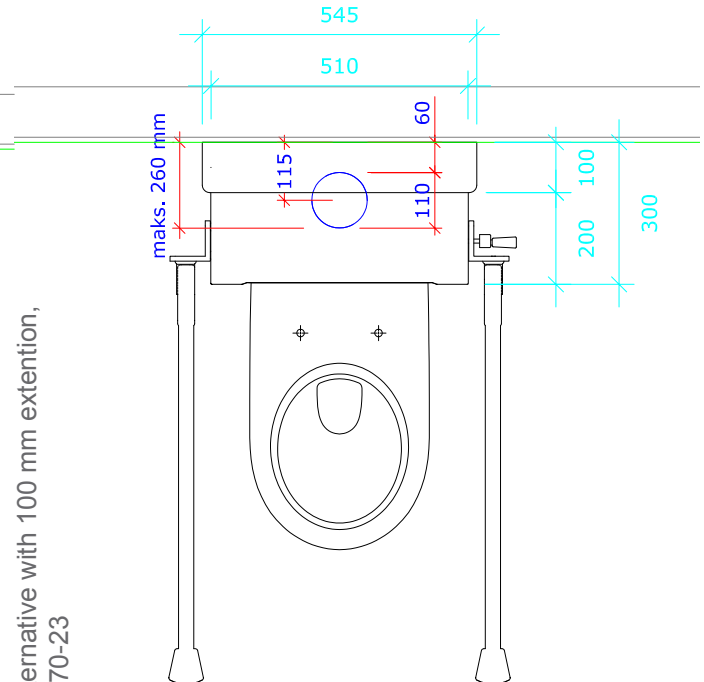
Electrical outlet on right side as shown in drawing.

Electrical cable/ pipe is pulled 500 mm from wall and placed 200 mm above finished floor and 100 mm from the center of the cistern's drain.

Electrician connects IP44-box after the cistern is installed. (IP44-box not included).



Alternative with 50 mm extension,
5970-22



Alternative with 100 mm extension,
5970-23

BANO SHOWER POLE/ GRAB BAR

5581/L BANO SHOWER POLE, LEFT ANGLE
5581/R BANO SHOWER POLE, RIGHT ANGLE

CON

For exact position please examine blue prints and technical plans for each project.

CONSTRUCTION: All walls must be made of materials approved for use in wet rooms in which screws can be inserted for residual fittings such as bathroom cabinets, mirrors, light fixtures, grab bars, etc

NOTE! CONSTRUCTION:

Loadtested for 500 kg.

Minimum requirement,
nailingstrips:

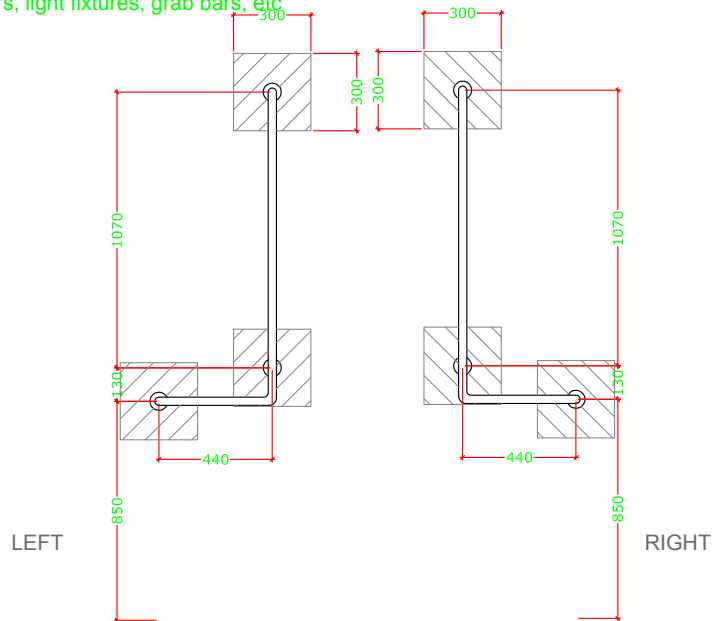
18mm x-finèr

W: 300mm

H: 300mm

Nailingstrips must be placed
flush against wall
material.

Nailing strips are indicated with
shaded area.



BANO GRAB BAR, L-SHAPE

5591/L BANO GRAB BAR, LEFT ANGLE
5591/R BANO GRAB BAR, RIGHT ANGLE

CON

For exact position please examine blue prints and technical plans for each project.

CONSTRUCTION: All walls must be made of materials approved for use in wet rooms in which screws can be inserted for residual fittings such as bathroom cabinets, mirrors, light fixtures, grab bars, etc

NOTE! CONSTRUCTION:

Loadtested for
500 kg.

Minimum requirement,
nailingstrips:

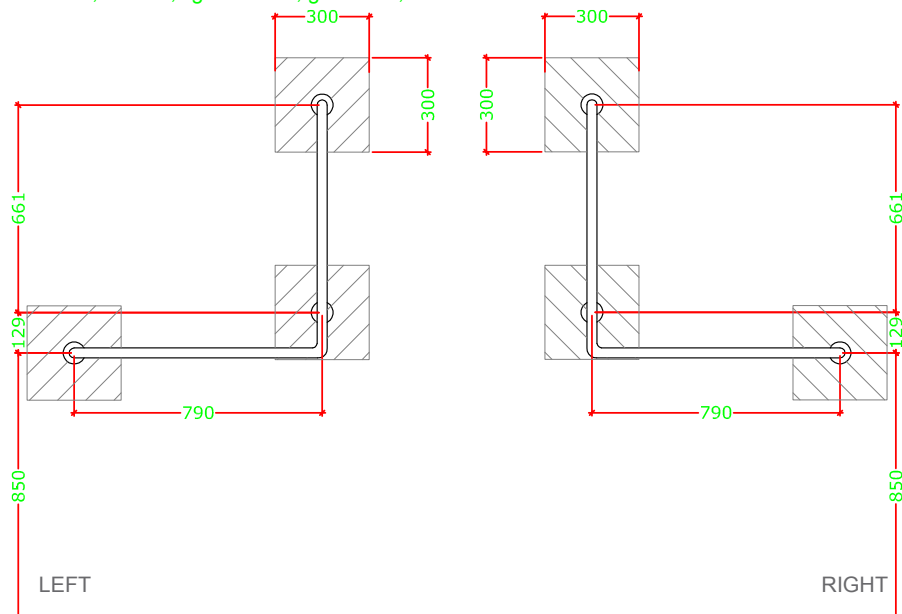
18mm x-finèr

W: 300 mm

H: 300 mm

Nailingstrips must be placed
flush against wall
material.

Nailing strips are indicated
with shaded area.



BANO SHOWER SEAT

58820 BANO SHOWER THERMOSTAT

For exact position please examine blue prints and technical plans for each project.

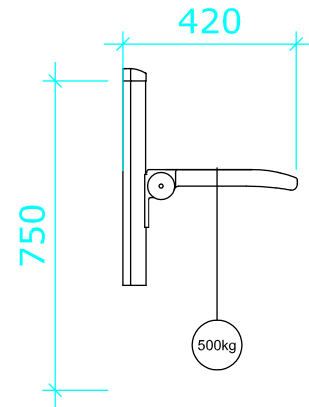
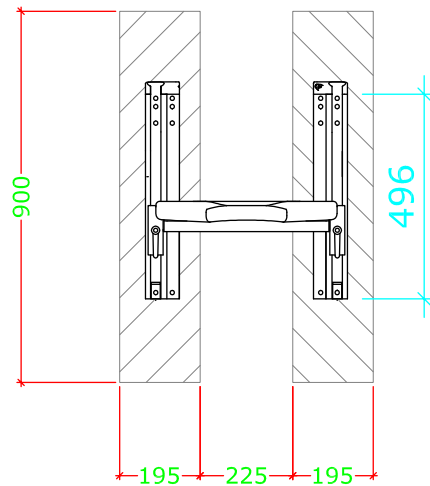
CONSTRUCTION: All walls must be made of materials approved for use in wet rooms in which screws can be inserted for residual fittings such as bathroom cabinets, mirrors, light fixtures, grab bars, etc

NOTE! CONSTRUCTION:
Loadtested for 500 kg.

Minimum 48x198 board
Height: Min 900 mm preferabit
up to ceiling.

Nailingstrips must be placed
flush against wall
material.

Nailing strips are indicated with
shaded area.



BANO SHOWER THERMOSTAT

58820 BANO SHOWER THERMOSTAT

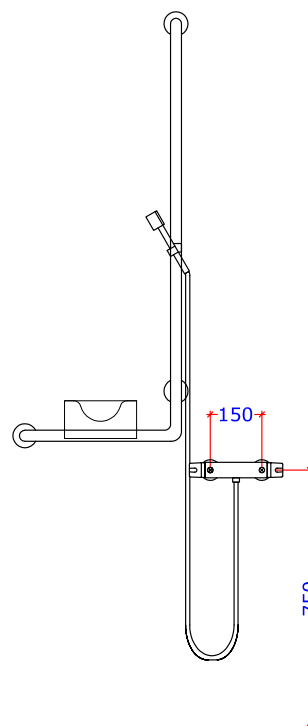
PLU

For exact position please examine blue prints and technical plans for each project.

NOTE! PLUMBING:

Height 750 mm above finished
floor.

Finished outside wall with
nippel/ rail for 150 m/m, 3/4"
external threads (G20).



BANO LAMP

5114, 5115

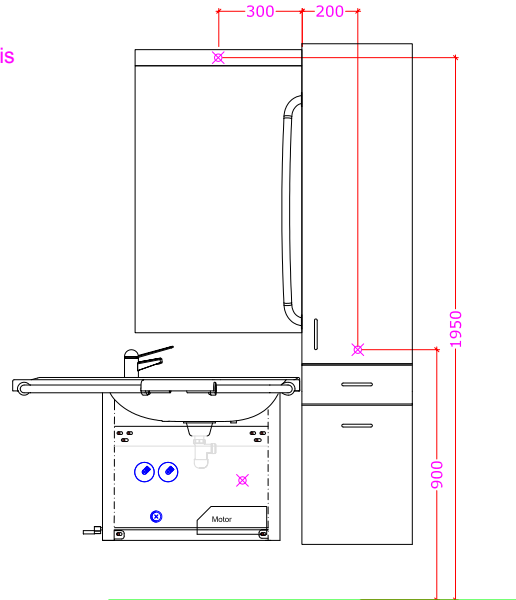
BANO LAMP

For exact position please examine blue prints and technical plans for each project.

NOTE! ELECTRICAL:

Outlet for light fixture above mirror is 1950 mm above finished floor.

An electrician connects the light fixture.



BANO CABINET WITH GRAB BAR

5302D/L
5302D/R

BANO CABINET WITH GRAB BAR, LEFT
BANO CABINET WITH GRAB BAR, RIGHT

For exact position please examine blue prints and technical plans for each project.

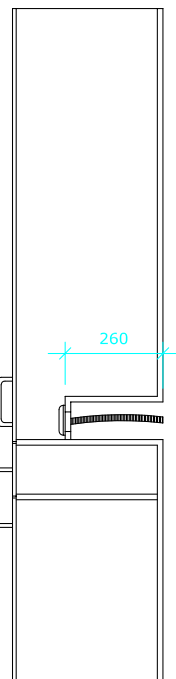
CONSTRUCTION: All walls must be made of materials approved for use in wet rooms in which screws can be inserted for residual fittings such as bathroom cabinets, mirrors, light fixtures, grab bars, etc.

NOTE! ELECTRICAL:

Outlet is 900 mm above finished floor.

Cable/ electrical pipe is pulled 400 mm from the wall.

An electrician connects the outlet after the cabinet is installed.



NOTE! CONSTRUCTION:
Loadtested for 400 kg.

Minimum requirement, nailingstrips:
18mm x-finèr
W: 400 mm
H: 200 mm

Nailingstrips must be placed flush against wall material.

Nailing strips are indicated with shaded area7

CON

EL

